



Rebuild Hawai'i Consortium

Q4 AGENDA

6 December 2011

'Emalani Room (320) @ the Hawai'i Convention Center

7:30 **Networking and Coffee**

8:00 **Commence Meeting**

Brandon Hayashi | President, Rebuild Hawai'i Consortium

8:15 **Introduction of New Affiliates**

Carolyn Weygan-Hildebrand | Research and Statistics Office, Department of Labor and Industrial Relations

Ken Sheeks | Owner and General Manager, Hawai'i Skylights and Solar Fans

8:30 **Opening Speaker:** Can we think and act differently about energy efficiency?

Sophie Cocke | Reporter-Host, Civil Beat

8:45 **Session 1: PARTNERSHIPS** – developing innovative energy efficiency approaches

Moderator: Robin Campaniano | General Partner, Ulupono Initiative

Sean Connelly | Creative Director, KYA Sustainability Studio –

Rob Kinslow | Executive Director, Hawai'i Interfaith Power and Light –

Michael Chang | Deputy Program Manager, Hawai'i Energy –

Carrot Mob approach and partnerships

Religious partnerships

Community partnerships

9:45 **Networking Break**

10:00 **Session 2: FINANCING** – turning energy efficiency projects into reality

Moderator: Lori Hiramatsu | Training and Marketing Manager, Hawai'i Economic Development Corporation

Miles Kubo | Chief Operating Officer, Energy Industries –

Gwen Yamamoto-Lau | President, Hawai'i Community Reinvestment Corporation –

Joseph Burns | Director, O'ahu Small Business Development Center –

Overview of financing vehicles for energy efficiency projects

Green Sun Hawai'i program

Small business financing info

11:00 **Session 3: POLICY** – assisting the energy efficiency sector to thrive

Moderator: Carilyn Shon | Energy Efficiency Branch Manager, Department of Business, Economic Development and Tourism

Josh Strickler | Chief Researcher, Public Utilities Commission –

Ken Kelly | Senior Project Leader for HCEI, National Renewable Energy Laboratory –

Senator Mike Gabbard | Chair, Senate Energy and Environment Committee –

EEPS framework and on-bill financing dockets update

Transportation efficiency update

Legislative energy efficiency update

12:00 **Pau**

The [Rebuild Hawai'i Consortium](http://energy.hawaii.gov/programs/achieving-efficiency/rebuild-hawaii) shares information about energy practices, products and services; however, it does not promote or endorse products and/or vendors.



SPEAKERS



Carolyn Weygan-Hildebrand joined the **Department of Labor and Industrial Relations Research and Statistics Office** in February 2011 as a program analyst. In her current capacity, she fosters peer collaboration and capacity-building while completing the remaining deliverables required of a \$1.25M labor market information improvement grant that ends on December 30, 2011. ¶ Her career interests are in human capital development, community-based economic development, and evaluation and accountability. Weygan-Hildebrand spent the last ten years mostly in workforce development; As an employment analyst of the Workforce Development Council, she led the completion of a 2009-2014 State Workforce Development Plan, 2007 Directory of Workforce Development Programs, and technical preparation for competitive grant-seeking activities. ¶ Weygan-Hildebrand is professionally affiliated with the American Evaluation Association, American Society for Training and Development, and American Fundraising Professionals, and Women in Renewable Energy. ¶ She attended the University of Hawai'i at Manoa where she studied economics (PHD AgEcon ABD, MA Economics) and planning studies (Graduate Certificate). She is a former East West Center degree grantee and a graduate of the University of the Philippines Baguio (cum laude).



Ken Sheeks is the owner of **Hawai'i Skylights and Solar Fans**, the Premier Solatube skylight dealer for the state of Hawaii. ¶ Before starting Hawai'i Skylights and Solar Fans, Sheeks worked at the San Onofre Nuclear Generating Station in San Clemente, California for 25 years. His duties included refueling the reactors and managing many special projects, including moving spent nuclear fuel from one spent fuel pool to another on the other side of the job site. ¶ Hawai'i Skylights and Solar Fans was established in March of 2008 and now includes experienced, licensed contractors doing installations on all four islands. Solatube tubular skylights and solar attic fans are one of the first steps to take when reducing energy consumption and "going green". ¶ Sheeks takes a lot of pride in knowing that he can help people reduce their energy bill for a very small investment.



Sophie Cocke is the land reporter at **Honolulu Civil Beat** where she covers issues related to the environment and energy. ¶ Prior to this, she worked for Pacific Business News covering energy, technology and healthcare, and worked for the Maui Weekly. ¶ Cocke has a master's degree in journalism from the City University of New York's Graduate School of Journalism and a bachelor's degree from the University of Virginia, where she majored in History. Prior to entering journalism, Cocke worked as a research associate for a collection of historical documents at the New-York Historical Society, and has worked for the nonprofit sector in the fields of human rights and the arts.



SESSION 1

partnerships



Robin Campaniano is a General Partner in the **Ulupono Initiative**, he also serves as a Senior Advisor to Farmers Insurance Hawai'i. From 1992 through 2009, he served as Vice Chair, President and Chief Executive Officer of AIG Hawaii Insurance Company and Hawai'i Insurance Consultants, and Chair and Chief Executive Officer of 50th State Risk Management Services and American Pacific Insurance Company. Prior to joining AIG Hawai'i, Mr. Campaniano was Insurance Commissioner for the State of Hawai'i, and District Director and District Counsel for the U.S. Small Business Administration's Honolulu District Office. He also practiced law in the private and public sectors. Mr. Campaniano is extremely active in community affairs and has chaired the following major charitable and business organizations: the Aloha United Way Campaign, The Chamber of Commerce of Hawaii, the Hawai'i Business Roundtable, the University of Hawai'i Foundation, and the Public Schools Foundation of Hawaii. He is a former Regent for the University of Hawai'i and has served as a Regent for Chaminade University. He has also served as President of the UH Alumni Association and Chair of the UH Athletic Advisory Board. He currently chairs the University of Hawai'i Shidler College of Business Advisory Council. Mr. Campaniano serves on the board of the First Hawaiian Bank and the advisory board of Oceanic Time Warner Cable. He is also a director of the East West Center Foundation, Great Aloha Run Foundation, Hawaii Children's Discovery Center, HMSA Foundation, and the Pacific Asian Affairs Council.



Sean Connelly is the Creative Designer, Design & Planning at the **KYA Sustainability Studio**. ¶ Born and raised on O'ahu, Connelly is passionate about revitalizing Hawai'i's built environment. He is driven by the pursuit to empower communities, restore ecosystems, and secure local abundance for future generations through sustainable buildings and businesses. ¶ A valedictorian from Castle High School, Connelly earned a Bachelor in Environmental Urban Design and a Doctorate of Architecture from the University of Hawai'i. ¶ Through his studies, Connelly transformed his childhood curiosity of what a "truly Hawaiian" city would look like into a framework for urban redevelopment based on the principles of indigenous Hawaiian resource management.



Rob Kinslow is the Executive Director at the **Hawai'i Interfaith Power & Light**. ¶ Rob has been an organic farmer, systems engineer, cultural practitioner, and is currently completing a trans-disciplinary masters degree in leadership and sustainable development at HPU. ¶ Since 1994, he has volunteered 25,000 hours for community development with NGOs around the planet. This summer he was selected, by a national search committee, to travel to west Africa with a cohort of graduate students. A collaboration between the US State department and Duquesne University, the Emerging Leaders in Extraction and Environment program goal was to provide, using the lens of a difficult industrial case study, and first-hand experiences with gold mines, fisheries, hydropower and oil/gas industries in post-colonial Africa in order to learn from and share in development of thought leadership and best practices. ¶ For the last four years he has been collaborating with the steering committee of the Hawaii Interfaith Power & Light, a project of Interfaith Alliance Hawai'i to "encourage indigenous stewardship values, energy efficiency, and renewables within Hawai'i's faith communities." He believes in the power of P: passion, perseverance, practice, and people.



Michael Chang is Deputy Program Manager at **Hawai'i Energy**. ¶ He brings a broad range of energy experience gained from 18 years in the energy industry, working for Hawaiian Electric Company, Johnson Controls and now Hawai'i Energy. He has helped businesses and federal agencies identify ways to cut energy costs, implement energy-saving actions and achieve energy efficiency goals. ¶ Chang has served as Honolulu branch manager and service manager at Johnson Controls as well as commercial energy efficiency program manager and federal account executive at Hawaiian Electric Company. ¶ Chang holds a mechanical engineering degree and an MBA from the University of Hawai'i. He serves as president of the American Society of Heating, Refrigerating and Air Conditioning Engineers (ASHRAE) Hawai'i Chapter. ¶ At his previous position, Chang planned and implemented \$20 million in energy-efficiency projects for city, state and federal facilities, with each project saving at least 30 percent in energy use.



SESSION 2

financing



Lori Hiramatsu is the Training and Marketing Manager for **Hawai'i Economic Development Corporation (HEDCO) LDC**, a non-profit company licensed and certified by the Small Business Administration to administer their 504 Loan Program. ¶ She has over 27 years of experience in the banking industry, and has served as a board and committee member for several local organizations. She is mainly responsible for lender training, and the education of small businesses or those who interact with the small business community about the benefits of the SBA 504 Loan Program.



Miles Kubo is Executive Vice President and Chief Operating Officer of **Energy Industries Corporation (EI)**, an energy services company that specializes in energy-efficiency and renewable energy solutions to help businesses and institutions reduce energy consumption and greenhouse gas emissions. EI is a Hawai'i-based company that currently has operations in California, Washington, Oregon, and Idaho. ¶ Kubo has authored numerous articles in business publications about the value of energy conservation programs. He is a strong advocate of structured finance and financial engineering for energy retrofit projects. ¶ Kubo is a graduate of The Wharton School of the University of Pennsylvania and holds a Masters of Business Administration degree in Finance.



Gwen Yamamoto Lau is President of the **Hawai'i Community Reinvestment Corporation (HCRC)**, a 501(c)3 Hawai'i non-profit corporation designated as a Community Development Financial Institution (CDFI) and a Community Development Entity (CDE) by the United States Department of Treasury. ¶ HCRC's mission and purpose is to facilitate affordable housing, community development and economic development throughout the state of Hawai'i. Additionally, HCRC has been contracted by the state to administer its GreenSun Hawai'i program for energy efficiency/renewable energy financing. ¶ Gwen has over 25 years of banking and finance experience, as well as a strong commitment of service to our community through her active involvement with nonprofit and charitable organizations. Prior to joining HCRC, Yamamoto Lau served as President of the Hawai'i Central Credit Union and Senior Vice President/Regional Manager with Central Pacific Bank. ¶ Born and raised in Hilo, Hawai'i, Yamamoto Lau resides on the island of O'ahu with her husband and children.



Joseph Burns is the O'ahu Center Director of the **Hawai'i Small Business Development Center**. In this role, he leads consulting projects in diverse areas such as renewable energy, manufacturing and agriculture, which significantly contribute to the building of Hawai'i's economic capacity. Burns' areas of expertise include organizational performance improvement, finance and strategic planning/execution. ¶ As an active contributor to local organizations, Burns serves on various boards and planning committees, including the Chamber of Commerce of Hawai'i, the Honolulu Japanese Chamber of Commerce, and the Small Business Administration, among others. ¶ He is a frequent guest speaker at training and business events, such as the U.S. and Foreign Commercial Service's Export U, bank officer training classes and SBA seminars on capital formation, among others. ¶ After a successful career as a CEO in building a startup manufacturing/exporting company, Burns embarked on a second career consulting for hundreds of companies in both the private and government sectors, in some 29 U.S. states and Canadian provinces, culminating in his assuming the leadership of the O'ahu Center of the SBDC. ¶ Burns earned a BA (honors) in Chinese Language and Asian Studies from Oakland University, and an MBA (honors) from the Thunderbird School of Global Manage-



SESSION 3

policy



Carolyn Shon is the Energy Conservation Program Manager for the for the **State of Hawai'i**. ¶ She has extensive experience working on a number of energy programs. These programs include utility integrated resources planning and demand-side management program development and intervention before the Public Utilities Commission; renewable industry support and coordination to promote renewable energy use in Hawai'i; legislative initiatives for efficiency and renewable programs; sustainable/energy-efficient building programs for commercial and residential buildings; and partnership programs with the private sector, federal entities, county entities, and other state agencies to promote efficiency and renewable energy programs.



Joshua Strickler is the Chief of Research at the **Hawai'i Public Utilities Commission**. ¶ Prior to coming to the Commission, Josh was the Facilitator of Renewable Energy Projects with the State of Hawai'i. ¶ He is licensed as a professional engineer and attorney in Hawai'i.



Kenneth Kelly is serving in Hawai'i as **National Renewable Energy Laboratory's (NREL)** Senior Project Leader of the Hawai'i Clean Energy Initiative (HCEI) and Co-chair of the Transportation Working Group for HCEI. ¶ Kelly has 20 years of experience working on energy efficient transportation research at NREL. While there, he has managed and conducted research in a wide array of advanced vehicle and transportation technologies. Most recently he managed NREL's research and development on advanced thermal control technologies for automotive power electronics. ¶ Kelly's past experience at NREL includes alternative fuel vehicle emissions testing and analysis, alternative fuel vehicle fleet evaluations, light-duty and heavy-duty hybrid vehicle systems modeling, development of computer aided engineering tools for robust design of hybrid vehicle and fuel cell technologies, and research and development of novel heat transfer technologies. Kelly was one of the founding members of NREL's Alternative Fuels Data Center. ¶ His industrial experience includes work as a manufacturing engineer at Swagelok Inc. and Ohio Broach and Machine Company.



Michael Gabbard is a **State Senator** representing District 19 (West O'ahu). ¶ He previously served as a Honolulu City Councilman for District 1 (West O'ahu) from 2003 to 2005. Gabbard is a life-long educator and small businessman. He has been the Chair of the Energy and Environment Committee since 2009. ¶ Gabbard is committed to getting Hawai'i to kick its addiction to imported fossil fuel by exploring every avenue for energy efficiency and utilization of indigenous renewable energy resources. ¶ He's also a proud owner of an all-electric Nissan Leaf.

INFO

Click links to learn more about efficiency



partnerships

some interesting ways to work together...

Hawai'i Energy

Ulupono Initiative

Blue Planet Foundation

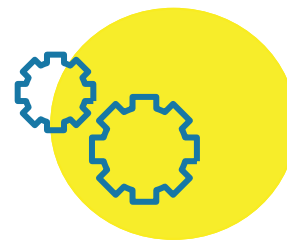
Kanu Energy Challenge

Carrotmob

One Block Off the Grid

OPower

Social Energy App (2012 launch by Facebook, OPower and Natural Resources Defense Council)



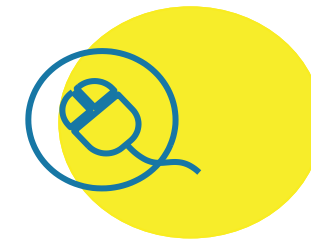
financing

more than just a loan...

Green Sun Hawai'i

Small Business Development Center

EPA's Environmental Finance Centers



policy

it can impact you in ways that you don't know...

Senate Energy and Environment Committee website

House Energy and Environment Protection Committee website

American Council for an Energy Efficient Economy

Alliance to Save Energy

Database of State Incentives for Renewables and Efficiency (DSIRE)

Department of Energy — Energy Efficiency and Renewable Energy

Local Energy Efficiency Policy Calculator (LEEP-C)

upcoming events

January 4

"The City Dark" screening and panel discussion

January 13

Hawai'i Energy Policy Forum's Clean Energy Day at the Capitol

January 19

Opening Day of 2012 Legislative Session

March 5

Rebuild Hawai'i Consortium Q1 2012 Meeting

March 7-8

Hawai'i Buildings, Facilities + Property Management Expo

April 3-4

Hawai'i Build and Buy Green Conference

OFFICERS

2011 — 2013 term

PRESIDENT



Brandon Hayashi is the Energy Project Developer at **Energy Industries**, Hawai'i's oldest kama'āina full-service energy solutions provider serving the commercial, industrial and institutional sectors. With a collaborative team of engineers, project managers, technicians and project developers, he delivers comprehensive energy solutions that maximize the combined benefits of efficiency, renewables and strategic energy planning. ¶ A significant portion of Hayashi's work is educating clients about the financial, technical and environmental benefits of comprehensive energy projects. ¶ In addition to being president of the Rebuild Hawai'i Consortium, he is the chair of the energy efficiency working group at the Hawai'i Energy Policy Forum, and a board member of Kanu Hawai'i, where he was co-chair of the inaugural Energy Challenge. ¶ Prior to Energy Industries, Hayashi worked in Aotearoa New Zealand where he took on a wide-range of roles in a start-up energy service company. In addition to his energy sector experience, Hayashi brings a diverse professional background encompassing non-profit management, journalism, and manufacturing. ¶ Hayashi holds a Master of Science degree in international management and energy efficiency from the University of London (SOAS), a Bachelor of Arts degree from Hope College in Michigan, and is a graduate of Punahou School.

PRESIDENT ELECT



Michael Chang is Deputy Program Manger at **Hawai'i Energy**. He brings a broad range of energy experience gained from 18 years in the energy industry, working for Hawaiian Electric Company, Johnson Controls and now Hawai'i Energy. He has helped businesses and federal agencies identify ways to cut energy costs, implement energy-saving actions and achieve energy efficiency goals. ¶ Chang has served as Honolulu branch manager and service manager at Johnson Controls as well as commercial energy efficiency program manager and federal account executive at Hawaiian Electric Company. ¶ Chang holds a mechanical engineering degree and an MBA from the University of Hawai'i. He serves as president of the American Society of Heating, Refrigerating and Air Conditioning Engineers (ASHRAE) Hawai'i Chapter. ¶ At his previous position, Chang planned and implemented \$20 million in energy-efficiency projects for city, state and federal facilities, with each project saving at least 30 percent in energy use.

VICE PRESIDENT



Estrella A. Seese is the Energy Policy & Planning Branch Manager for the **State of Hawai'i**. In her present capacity, she is leading her state energy team in enabling and facilitating Hawai'i's transition to a clean energy economy by reducing the state's dependence on imported fossil fuel by at least 70 percent by 2030. She represents the State in energy policy-related regulatory proceedings in Hawai'i to ensure that regulatory framework and policies that are developed will promote the achievement of the State's energy goals. ¶ Seese has over thirty years of experience in Hawai'i's utility regulation, utility rate setting, and energy planning. Prior to joining DBEDT, she spent most of her career with Hawaiian Electric Company, Inc. (HECO) as Director of Pricing, and was responsible for the development, administration, and implementation of the electric rates and tariffs for HECO as well as for Maui County (MECO) and the Big Island of Hawai'i (HELCO). ¶ Seese holds a Master of Arts degree in Economics from University of Hawai'i, Mānoa, and a Bachelor of Arts in Economics from University of Santo Tomas, where she graduated Magna Cum Laude. She was an East-West Center Degree Scholar, and a Ford Foundation Fellow.

