

Categorical Exclusion (CE), Environmental Assessments (EA), or Environmental Impact Statement (EIS) National Environmental Policy Act (NEPA)

Purpose: To assess the environmental effects of proposed actions for any project requiring a Federal permit, receiving Federal funding, or located on Federal land.

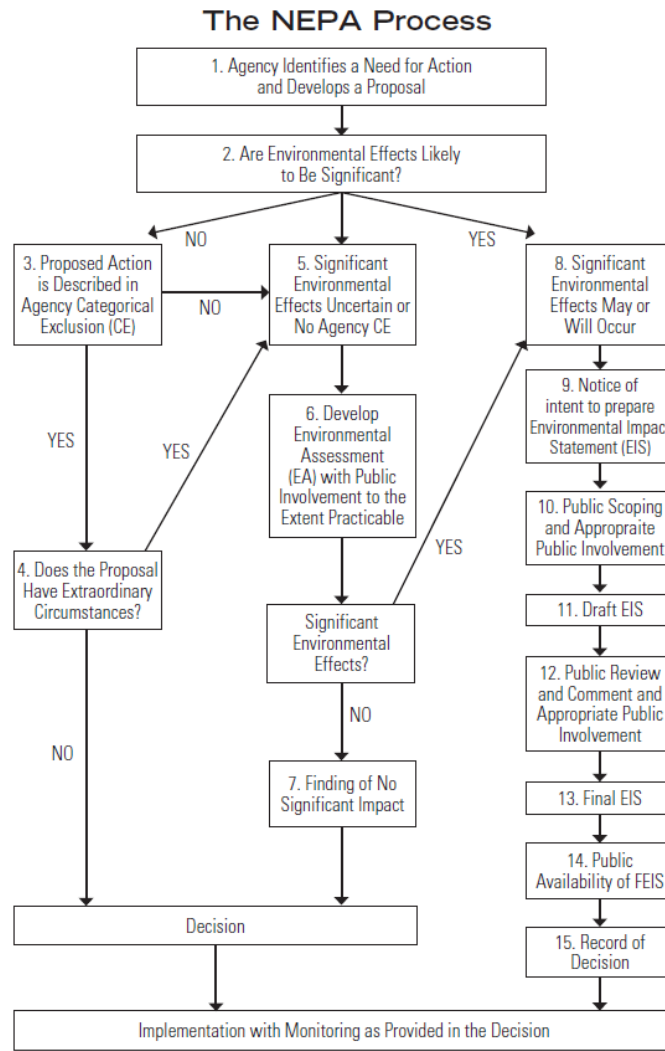
Approval Authority: Approval authority depends on the Federal Agency requiring the permit, providing funds, or providing or leasing land. For example if a project seeks to obtain an Incidental Take Permit by U.S. Fish and Wildlife Service, the project will also be required to comply with NEPA by preparing and processing a CE, EA, or EIS.

Potential Approval Prerequisites: Federal agencies encourage scheduling a pre-application meeting to discuss the processing requirements. Preliminary project and site details should be provided at this meeting in order to engage in useful dialogue.

Fees: Application Fee may be required depending on the Federal Agency specific requirements.

For Permit Application, Guidelines and Fees:

- Office of NEPA Policy and Compliance: <http://energy.gov/nepa/office-nepa-policy-and-compliance>
- NEPA Guidance by Federal Agencies: <http://energy.gov/nepa/guidance-requirements/guidance>
- NEPA Documents: <http://energy.gov/nepa/nepa-documents>



**Significant new circumstances or information relevant to environmental concerns or substantial changes in the proposed action that are relevant to environmental concerns may necessitate preparation of a supplemental EIS following either the draft or final EIS or the Record of Decision (CEQ NEPA Regulations, 40 C.F.R. § 1502.9(c)).*

Other Application Considerations:

1. NEPA processes differ among agencies and new legislation can change the way NEPA is implemented by agencies.
2. The Office of Federal Activities in the Environmental Protection Agency (EPA) is the official recipient of EISs prepared by Federal agencies, and publishes the notices of availability in the Federal Register for all draft, final, and supplemental EISs.
3. The estimated time to prepare and process environmental documents varies on the level of environmental review and analysis as well as specific Federal Agency processing procedures.