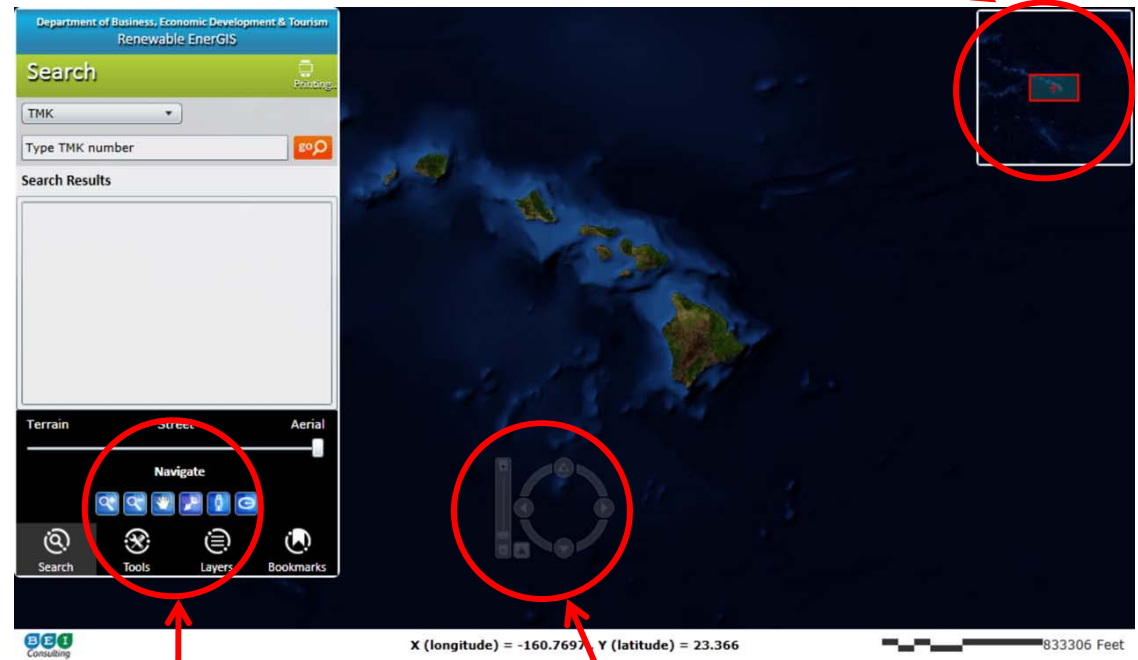


**Pan the big map by moving the “+” sign.**

## Getting Started

1. Disable pop-up blockers.
2. Site data will not be accessible until a specific site is selected.
3. The large map will zoom in on its center. Zoom slowly.
4. The main navigation tool zooms in and out with the slider, rotates the map by dragging the circle, or moves N,S, E or W by clicking on the arrows on the circle. The small arrow between the slider and the navigation circle resets North.
5. Click on the large map and drag the image to re-center it.
6. The red “+” sign in the small map at the upper right corner moves the large map.
7. The mouse’s scroll wheel also zooms the image in and out.
8. The blue navigation tools allow you to zoom, pan, hide the small map, obtain a street or bird’s eye view and select features by point .



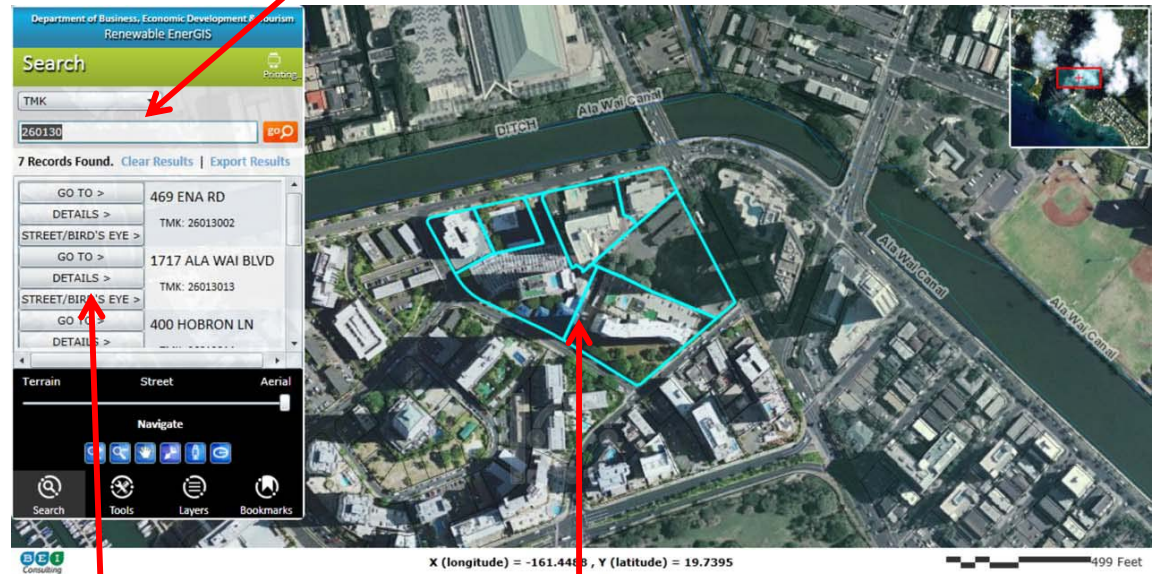
**Main navigation tool: zoom, rotate the map and move it north, south, east or west.**

**Blue navigation tools give you additional options.**

## Search #1: By TMK

1. The default search is by TMK. If you don't know the parcel's TMK, there are other ways to search.
2. Enter the TMK (real property tax parcel number) in the field *without punctuation*, then click "Go."
3. Renewable EnerGIS will identify a specific property if a specific TMK is entered.
4. Entering partial TMK numbers will result in Renewable EnerGIS suggesting TMKs which contain those digits.
5. Clicking "Details" brings up a separate window with the renewable energy and other attributes for that property. Pop-up blockers must be turned off.
6. Clicking "Street/Bird's Eye" opens Google Street View and Bing Bird's Eye View in a separate window. Pop-up blockers must be turned off.

Type a TMK number without punctuation, then click "Go."



Entering a partial TMK number may give you multiple results.

Click on "Details" to get detailed information on your selection's attributes in a separate window.

Clicking on "Street/Bird's Eye" opens a separate window for Street View or Bird's Eye View.

Turn off your pop-up blockers first.

## Search #2: By Address

1. The default search is by TMK. To switch to Site Address, pull down the menu arrow to the right of “TMK” and select “Site Address.”
2. Enter the house number and the street name in separate fields, then press “Go.”
3. Do not enter words such as “street,” “place,” “lane,” etc.
4. If you get no results, try entering partial house numbers and partial street names; Renewable EnerGIS will suggest matching possibilities.
5. For the property that you select, click on “Details” to get a separate Detail Page with information on that property’s renewable energy and other attributes.

**Enter house/building number and street name (without the word “street,” etc.) and press “Go.”**



**For the property selected, click on “Detail” or “Street/Bird’s Eye” to open those windows. Pop-up blockers must be off.**

**If you enter partial numbers and street names, multiple properties may be suggested. In this example, entering a specific address resulted in a single property identified.**



## Search #3: With Tools

1. The default mode is "Search." To change to "Tools" mode, select the white "Tools" icon at the bottom of the navigation pane.
2. Five tools are available, including measuring distance and area.
3. To search by point or polygon, click on "Select Features."
4. Five different tools are offered. See the next page for an explanation.
5. To search an area in the ocean, click on "Ocean-Select." With this tool, you can draw a polygon on the ocean and get details on the attributes of that area.

**"Select Features"  
gives you more  
searching tools.**

**Use "Ocean-  
Select" to obtain  
details on an area  
of the ocean.**

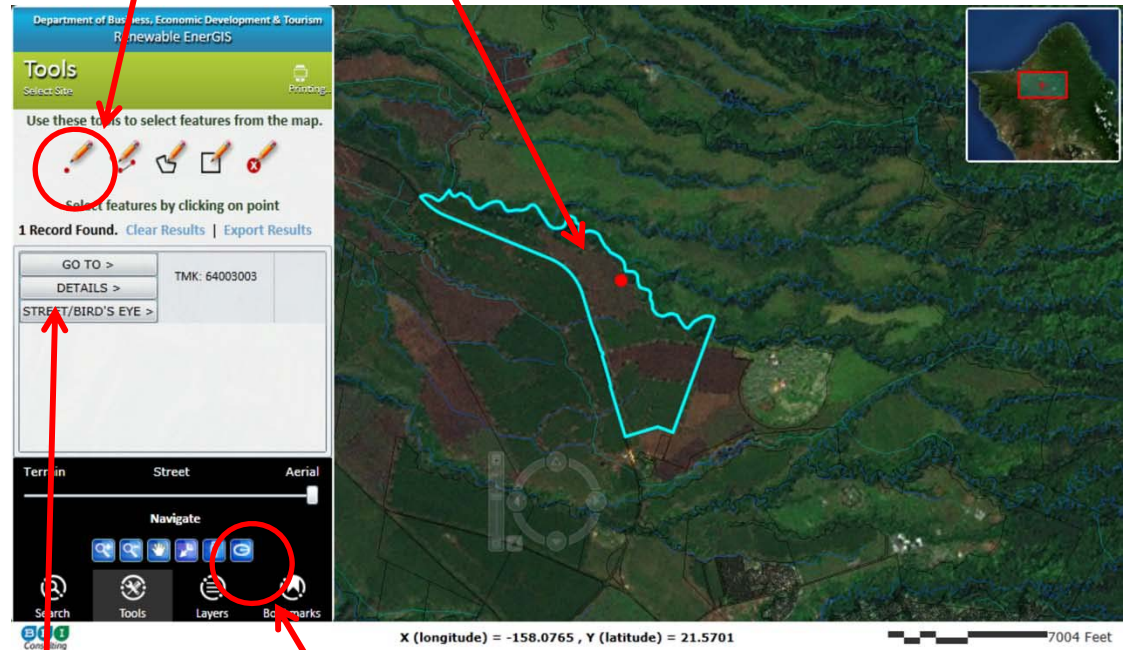
**Select "Tools" mode.**



## Search #4: By Point

1. Click on “Select Features” (see “Search #3.”)
2. Use “Select Features by Point” to select a specific point on the map. It is the icon with a pencil and a dot.
3. If you’re zoomed out, a window may pop up with the TMK number(s) and possibly other features. Click on the TMK to go to the Detail Page.
4. If you’re zoomed in close enough, the parcel you’ve selected will be highlighted and the TMK identified. Click on “Details” to go to the Detail Page for that parcel.
5. Another alternative, which works no matter which mode (Search, Tools, Layers, Bookmark) you are in, is to select the blue “Select Features by Point” tool in the black navigation pane, and click on the map. You will zoom directly to the parcel you chose.

**Choose the “Select Features by Point” icon, then click on the map. The map will zoom in on the parcel you selected.**



**You can also “Select Features by Point” using the blue icon at the bottom of the pane whether or not you are in Tools mode.**

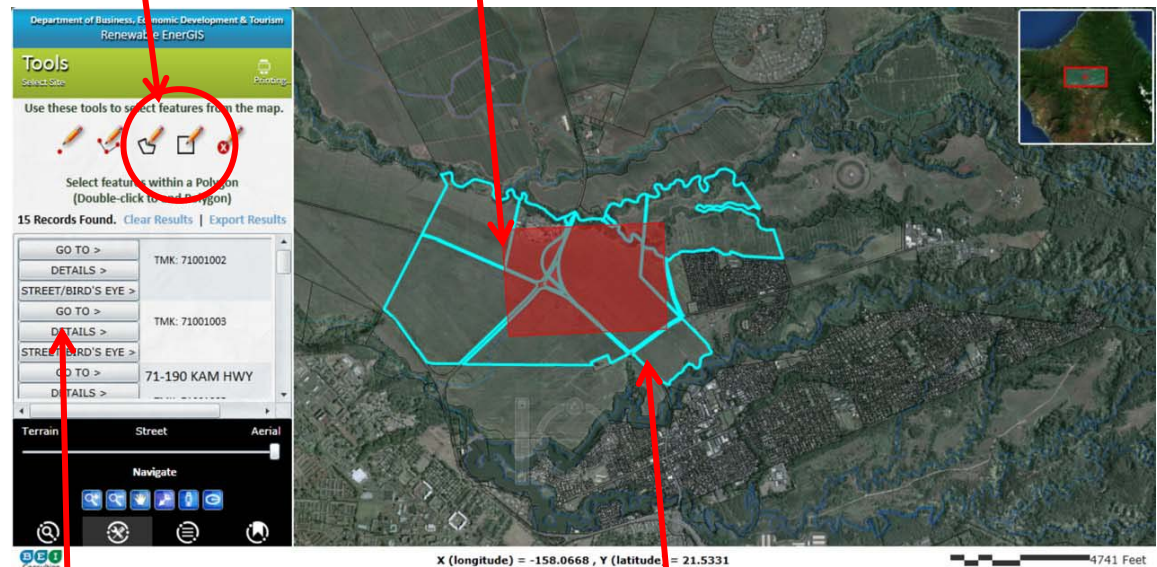
**To open a Detail Page on this parcel, click on “Details.” Pop-up blockers must be turned off.**

Click on the “Select Features Within a Polygon” icon, or the “Select Features Within a Rectangle” icon.

## Search #5: By Polygon or Rectangle

1. Click on “Select Features” (see “Search #3.”)
2. Use “Select Features Within a Polygon” to select an area on the map. It is the middle icon.
3. To draw the polygon, click on the icon, move your cursor to the map, and click to start. Draw one side of the polygon, click, draw the next side, click, and continue until you are back at the point where you started. Double-click to end.
4. You get similar results with the “Select Features Within a Rectangle” tool. You do not need to click at each corner, just click and drag.
5. The parcel(s) you’ve selected will be highlighted and the TMK(s) identified. Click on “Details” for the TMK you’re researching to go to a separate Detail Page.
6. If your polygon encompasses too many TMKs, you will be prompted to redraw it. Draw a smaller polygon or zoom in closer.

Draw a polygon on the map by clicking at each corner and double-clicking at the end. If you are using “Select Features Within a Rectangle,” just drag your cursor over the map.



Your polygon or rectangle will show up in red. Any TMKs it intersects will be highlighted.

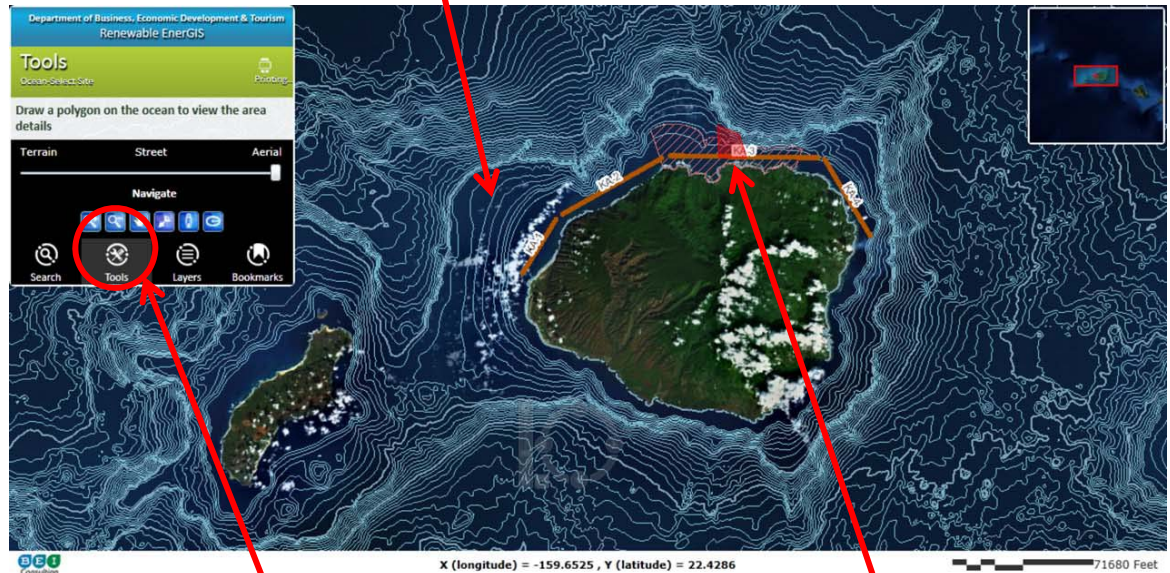
There may be multiple results. Choose the one you’re interested in.



## Search #6: Ocean-Select

1. To view ocean layers such as bathymetry and whale sanctuaries, first activate the appropriate Layers. (See Using Layers, next slide.)
2. Go to Tools Mode and choose Ocean-Select. (See Search #3.)
3. Click on the map and draw a polygon over the area you're interested in. Click when you complete each edge of the polygon, and double click at the end.
4. The ocean polygon needs to be smaller than 20 square miles. If it's too large, you'll be prompted to redraw.
5. Once you've drawn your polygon, you'll be asked if you want to continue to Details for that area. Pop-up blockers must be turned off.

**To display ocean layers such as bathymetry, first use the Layers mode to select the layers you want to show.**



**To select an area of ocean to research, choose the Tools mode and then choose Ocean-Select.**

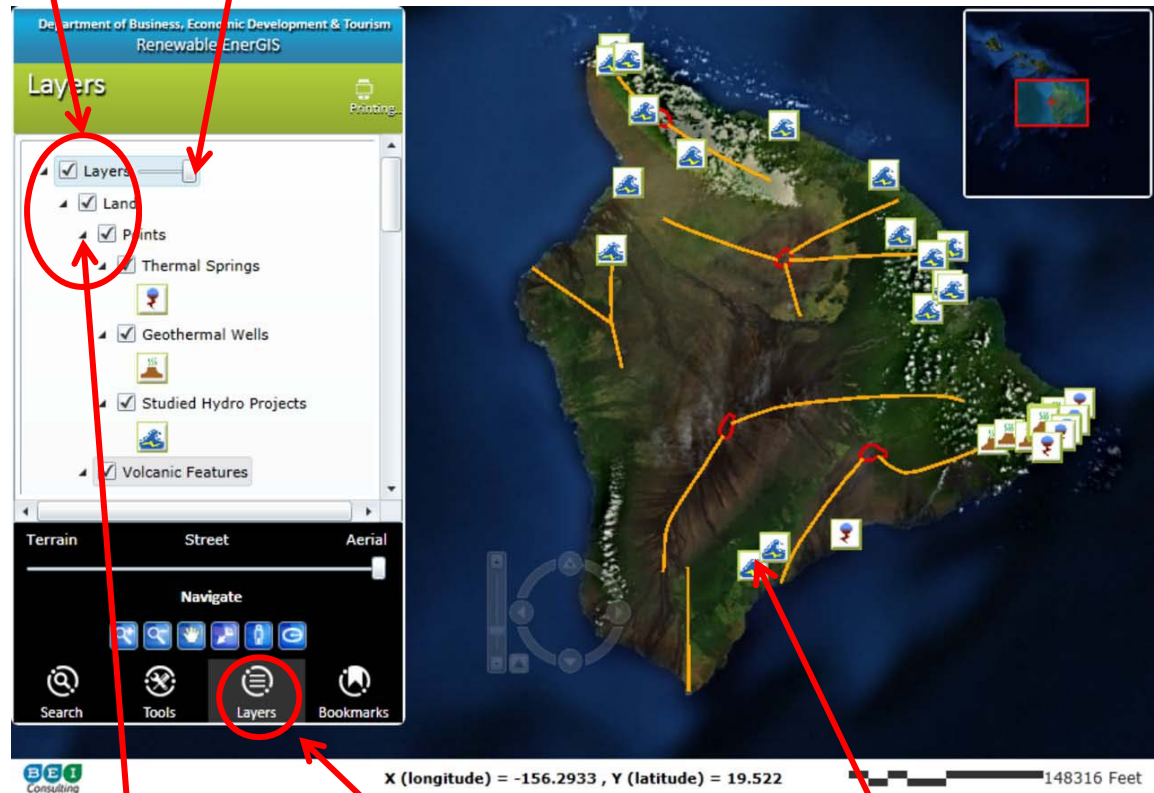
**Use your cursor to draw a polygon of the ocean area you wish to study. EnerGIS will ask if you want to proceed to Details, which will open on a separate page.**

**Activate all layer levels by clicking the check boxes.**

## Using Layers

1. “Layers” are displays of data. Select the “Layers” mode at the bottom of the black navigation pane.
2. You can view Layers without selecting a specific parcel.
3. There are 3 categories of Layers: Land, Ocean, and Wind Power Density.
4. To activate a Layer, click the check boxes for the Layer (e.g., “Land”), the sublayer (e.g., “Points”) and also for the features you want to see.
5. Sublayers and features are accessed with drop-down menus.
6. Data layers are overlaid on the map, so selecting multiple layers may result in a complex image. You may want to be selective in activating the Layers.

**Move the slider bar to make preset layers (e.g. streams and parcels) invisible.**



**Select the “Layers” mode.**

**Click the triangles to see the menu of layer choices.**

**Clicking on a feature will result in a pop-up window with more information.**



## The Detail Page

1. As mentioned earlier, once a specific site is selected, use the “Details” command to create a Detail Page. Disable pop-up blockers first.
2. Details on the resources, zoning, and other attributes of the parcel are shown on the Detail Page and are arranged by energy type.
3. Details most pertinent to an energy resource are shown in a pull-down menu (see next page, “Example of Details.”)
4. You may find details of interest in other energy resources’ menus as well. Not all resources show the same details.


Tax Map Parcel  
**64003003**

Site Address  
N/A

**This is the parcel you selected by searching**



Biomass



Geothermal



Hydroelectric



OTEC

No Data Available



Solar



Wave

No Data Available



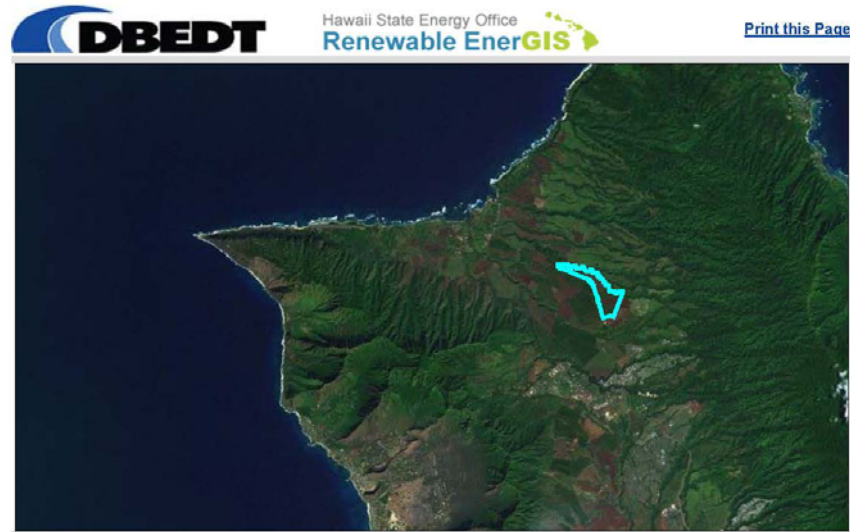
Wind



**To get details on any of the energy resources, click the icon or the “+” sign.**

## Example of Details

1. Clicking on the Biomass icon or its "+" sign opens the list of biomass-related attributes for the selected parcel.
2. The detailed attributes for other energy resources differ.
3. For an explanation of the abbreviations, units, etc. which are displayed, see the online User Guide text.
4. The attributes shown may vary by county. For instance, not every county has the Zoning LUO Designation.



Tax Map Parcel  
**64003003**

Site Address  
**N/A**



### Biomass

State Land Use District	Agricultural
Zoning LUO Designation	AG-1 Restricted Agriculture District
Soil Type (Land Study Bureau)	A, B, C, E
ALISH	Prime Unique
ALUM	A-1 P S
Rainfall	44.31 inches per year
Flood Zone	D
Reserve	N/A
Critical Habitat	N/A
SMA	N/A

**Collapse the details by clicking on the "-" sign.**

**See the online User Guide text for more information on these attributes.**

## Helpful Links

1. At the bottom of the Detail Page, there are helpful links for more information.
2. There is also a link to a feedback form.

The GIS REST links are particularly useful to users with GIS software and experience.

The Additional Resources links are provided here, and are also available from the Renewable EnerGIS landing page.

The screenshot shows the footer of the Renewable EnerGIS application. At the top, there are two data layers: 'Wave' and 'Wind', both showing 'No Data Available'. Below these are two sections of links. The 'GIS REST Services' section includes links for 'Operational Layers', 'Detail Layers', and 'State GIS Data'. The 'Additional Resources' section includes links to the 'Hawaii Nat'l Marine RE Center', 'OHA cultural/historical database', 'PV/Watts performance calculator', 'In My Backyard solar estimator', 'NOAA charts', 'NOAA coastal data', 'Nat'l Renewable Energy Lab', 'US Dept. Energy', 'City & County of Honolulu', 'County of Maui', 'County of Hawaii', and 'County of Kauai'. Below the links are logos for DBEDT, the State of Hawaii, Hawaii's Powered initiative, the U.S. Department of Energy, and the Hawaii Statewide GIS Program. The 'Contact Information' section lists Andrea T. Gill, Renewable Energy Specialist, with her title, department, division, address, phone/fax numbers, and website. At the bottom, there are links for 'Terms of Use', 'Privacy Policy', and 'Feedback Form', followed by a copyright notice for 2012.

Wave No Data Available

Wind

GIS REST Services [Operational Layers](#) | [Detail Layers](#) | [State GIS Data](#)

Additional Resources [Hawaii Nat'l Marine RE Center](#) | [OHA cultural/historical database](#) | [PV/Watts performance calculator](#) | [In My Backyard solar estimator](#) | [NOAA charts](#) | [NOAA coastal data](#) | [Nat'l Renewable Energy Lab](#) | [US Dept. Energy](#) | [City & County of Honolulu](#) | [County of Maui](#) | [County of Hawaii](#) | [County of Kauai](#)

DBEDT

STATE OF HAWAII

Hawaii's Powered

U.S. DEPARTMENT OF ENERGY

HAWAII STATEWIDE GIS PROGRAM

CONTACT INFORMATION:

Andrea T. Gill  
Renewable Energy Specialist  
State of Hawaii  
DBEDT - Department of Business, Economic Development & Tourism  
Strategic Industries (Energy) Division  
99 Aupuni Street #214; Hilo, HI 96720  
tel 808-933-0312; fax 808-933-0313  
[www.energy.hawaii.gov](http://www.energy.hawaii.gov)

[Terms of Use](#) | [Privacy Policy](#) | [Feedback Form](#)

Copyright © 2012, State of Hawaii. All rights reserved.

These logos are also links.

Your feedback is welcome!