

Clean Energy Wayfinders

Hawaii State Energy Office

February 7, 2022

Program Purpose

- Advance Hawai'i's clean energy goals
- Create jobs for a new generation of clean energy leaders
- Identify community needs and concerns
- Address inequities in vulnerable communities
- Increase understanding of Hawai'i's energy ecosystem and opportunities
- Establish a channel of communication and trust between communities, HSEO, and energy industry stakeholders



What is Clean Energy?

- Energy Conservation
- Energy Efficiency
- Renewable Energy
- Clean Transportation
- Active Transportation
- Energy Resilience
- Green Careers



Wayfinders Will:

- Outreach through community leaders and organizations to identify clean energy needs and facilitate two-way engagement
- Facilitate community input into clean energy planning and project development
- Facilitate community and household clean energy action plans
- Provide referrals to financial and technical assistance
- Facilitate green workforce training and employment opportunities
- Collaborate with community and school leaders to deliver clean energy outreach and education



Who Are the Wayfinders?

- Possess deep understanding of Hawai'i and local communities
- Commitment to clean energy, equity, and climate justice
- Experience in clean energy, education, public outreach, social services, community organization, or related fields
- Understanding and preferably experience living or working in low-to-moderate income, ALICE (Asset Limited, Income Constrained, Employed) and vulnerable communities
- Completion of an Associate degree, two years of college or commensurate experience



Community Benefits

- Reduced GHG Emissions
- Improved health outcomes
- Improved climate change mitigation
- Increased understanding of energy systems & benefits
- Improved access to and participation in:
 - Clean energy programs and planning
 - Clean energy career training and employment opportunities
 - Shared solar (CBRE) projects
 - Solarize initiatives
 - Clean energy financial assistance programs
- Community-guided, cost-effective incentive structures
- Increased community input and collaboration in State's transition to 100% clean energy economy



Major Partners and Resources



HAWAII STATE Energy Office

Program development, partners coordination,
grants applications and management



Hawai'i Energy

Energy efficiency training, programs and resources



Hawaii Green Infrastructure Authority

Clean energy finance training and
support

Community Organizations

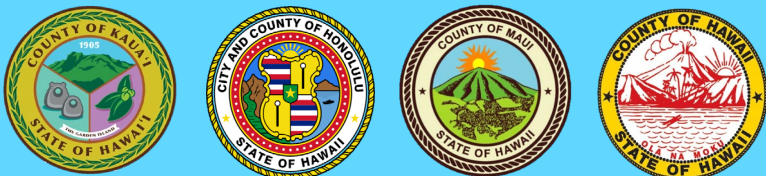


IBEW Local
1186



WORKFORCE DEVELOPMENT
COUNCIL

County Offices



Wayfinders site mentors, local engagement support

Energy Equity Hui

- HSEO
- Hawai'i Energy
- Hawaiian Electric
- Hawai'i Public Utilities Commission
- Hui O Hau'ula
- Sierra Club
- Blue Planet Foundation



KUPU
LEARN · SERVE · RESTORE

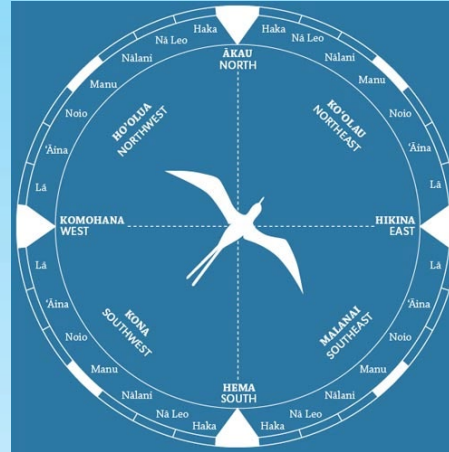
Recruitment, community and outreach
engagement training, Wayfinders
management

Other Partners

- NGOs
- Energy Companies
- Energy Service Companies
- Other State Agencies
- University of Hawai'i System

Program Strategy

- 8 Wayfinder initial program
- Local applicant preference
- Build relationships and trust with communities
- Measure performance
- Scale up
- Federal, state, private direct and in-kind partner funding

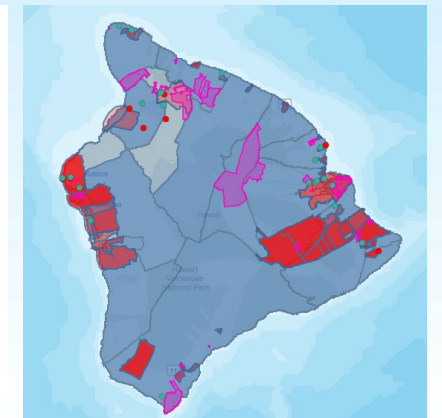
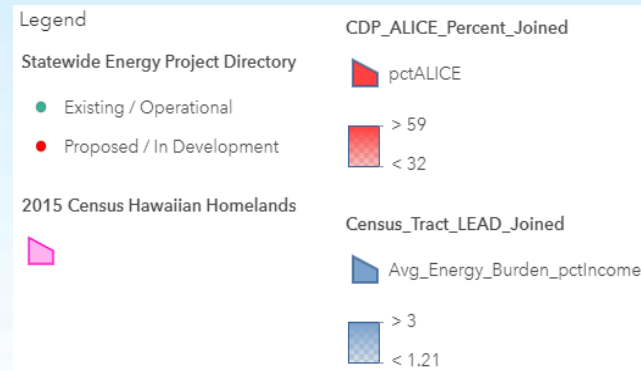
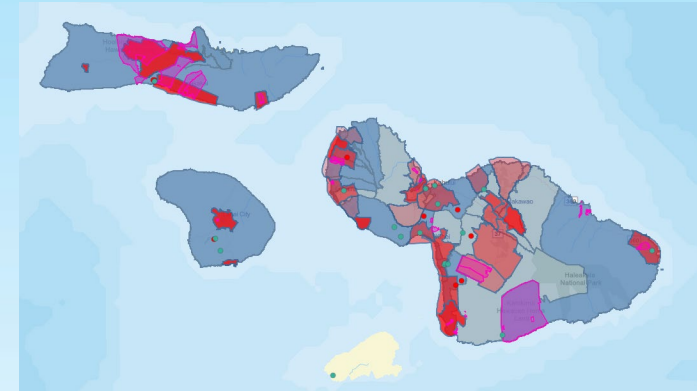
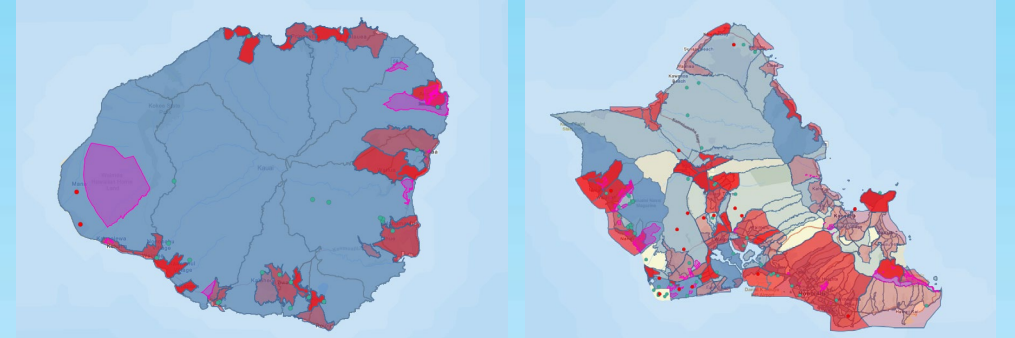


Wayfinders Distribution

Cohort Size	Honolulu County	Maui County	Hawai'i County	Kaua'i County
5	2	1	1	1
8	3	2	2	1
10	4	3	2	1
15	6	4	3	2
25	11	7	4	3
35	16	9	6	4
45	22	11	7	5

Community Database

- Geospatial database utilizing socioeconomic data and proposed utility-scale renewable project locations
- Help identify priority communities and community organization partners
- Survey communities and update database



Positions and Responsibilities

Program Coordinator - HSEO

- Develop and direct CEW program
- Apply for and administer funding
- Coordinate partnerships & training
- Compile, analyze, and report data

HR Management - Kupu `Aina Corps

- Recruit, hire, manage payroll and HR
- Support training

County Site Mentors

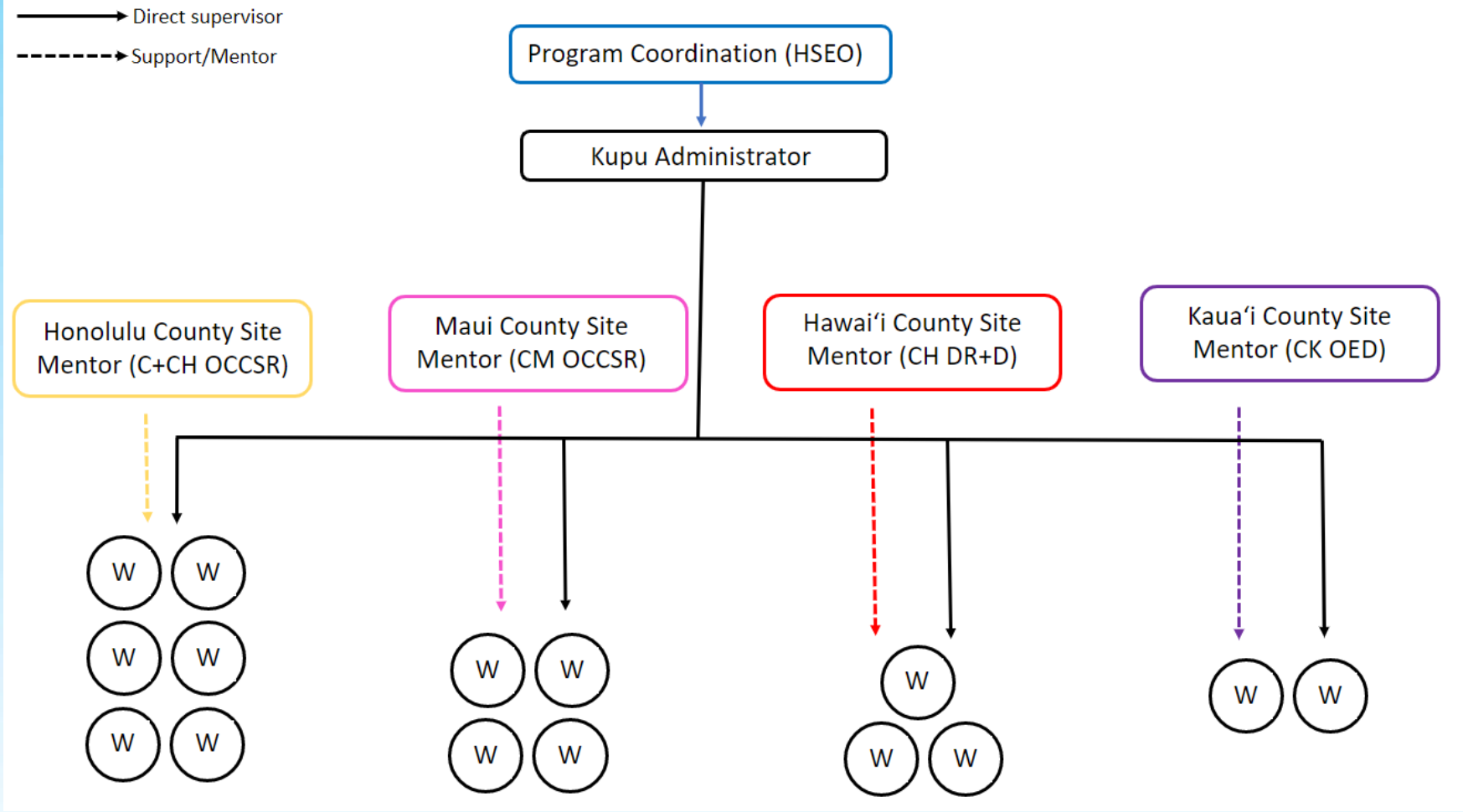
- Facilitate local community connections
- Help recruit, host, train, coordinate Wayfinders

Clean Energy Wayfinders

- Engage with community organizations
- Provide clean energy education
- Direct community members to programs and resources
- Facilitate community input and information gathering



Organization Chart



Wayfinder Training

- Comprehensive training program
 - Introductory intensive
 - Follow-on training through the year
 - Attendance at summits, conferences, workshops
- Curriculum includes:
 - Energy conservation and efficiency
 - Renewable energy
 - Clean and active transportation
 - Energy resilience
 - Financial assistance resources
 - Green workforce development
 - Equity
 - Hawai'i's culture and history
 - Community outreach and engagement



Mahalo Nui Loa

Questions?

Contact Info:

Parker.D.Kushima@hawaii.gov

Amanda.K.Ho.intern@hawaii.gov



HAWAII STATE
Energy Office